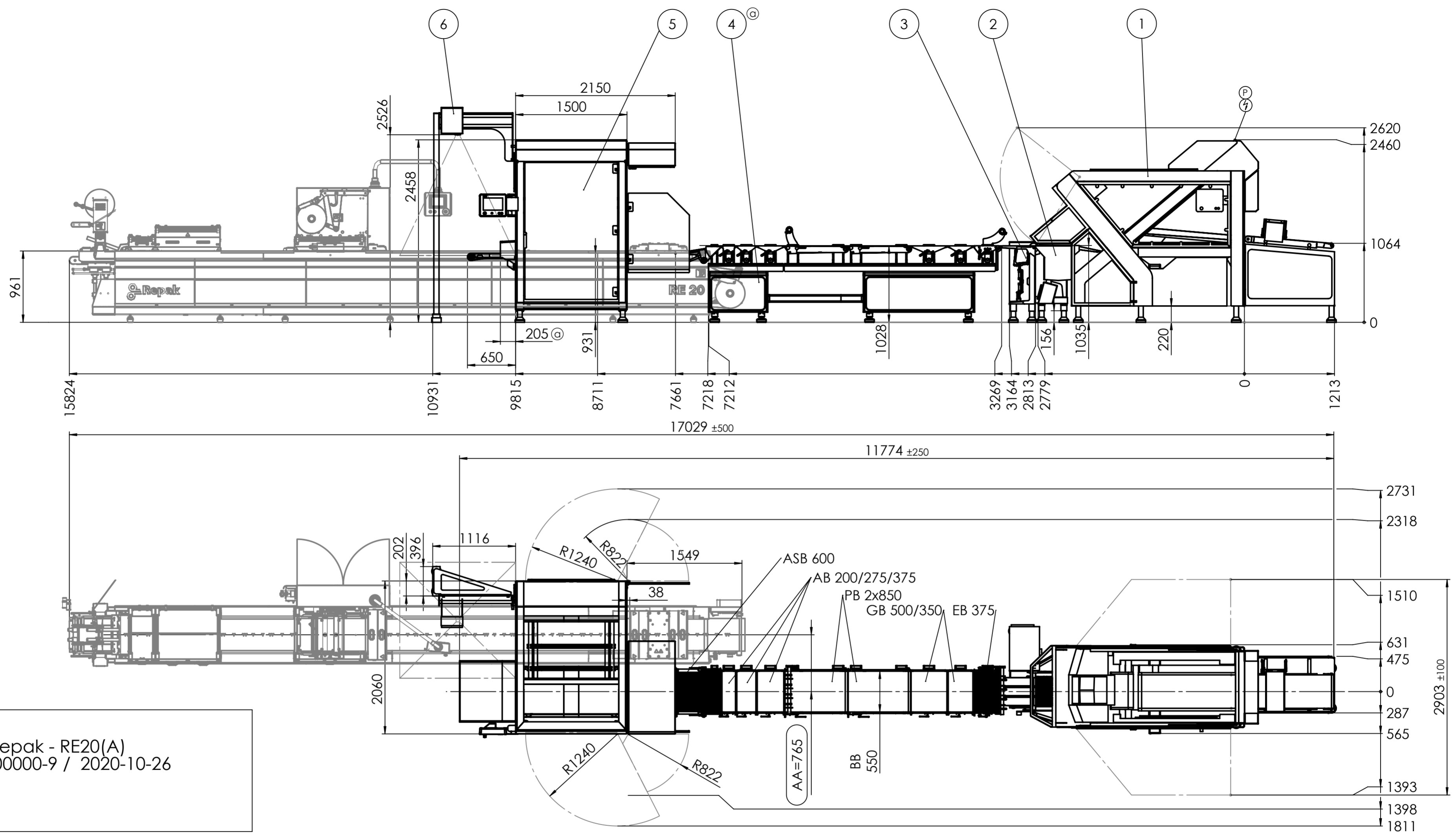


Please ensure you have sufficient clearance throughout your entry routs, to transfer all individual weber components to their designated position. Please refer to Weber component dimensions list.

Slicer TS500 / TS700
 general power value for TS700 machines specification see acknowledgement for order / offer
 compressed air supply*
 coupling plug
 - AG 1/4 NW7
 - min. 6bar
 compressed air consumption
 - min 50 l/min
 - max. 150 l/min
 current supply (national dependent)
 - 7A
 - 400 V / 50 cycle / 3 / N / PE
 - supply value 10 KVA
 product throat hight
 - 200/220 mm
 product throat width
 - 450/500 mm

Pick & Place Robot - Single-Picker
 compressed air supply
 coupling plug
 - AG 1/4 NW7
 - min. 6bar
 compressed air consumption (depending on intervals)
 - ø 155 NL/min
 current supply (national dependent)
 - connection Euro-Standard CCE
 - 16 A
 - 200V - 600V three-phase current 50/60 cycle
 - supply current 4 KVA



machine no.:
 Packaging machine: Repak - RE20(A)
 Drawing no.: 00-00-9200000-9 / 2020-10-26
 Order no.:
 Cut off:
 Web width:

The final length of the discharge conveyor belt at the Picker as well as the individual conveyor belts at the CPB Compactbuffer cannot be defined before all required information are available and could be considered. These are for instance the final drawing of the packaging machine, the final drawing of the die set or performance/throughput requirements. The shown dimensions do present a standard execution of the equipment and is subject to change.

Weber does not guarantee for the correctness of the dimensions and functions of the components which are not part of Weber's scope of supply !!!

Up and downstream (non-Textor) equipment has to be adjustable in height about +/- 50mm!

3200002684 (60881-002)
 -1x CCE04001-10264
 +1x CPB01001
 +1x WPRO2001
 +1x PCS02001
 +1x VM Repak 9200000-9/ 2020-10-26

SUBJECT TO CHANGE WITHOUT NOTICE !!!
 Information on weight and measurements are approximately !

Modification order

Diese Zeichnung ist unser Eigentum und darf ohne unsere Genehmigung weder vervielfältigt noch an Dritte weitergegeben oder zur Einsicht vorgelegt werden.		Kunde 1052837 - Winona Foods	
α CPB Linksv.; WPR Haube	31.03.2021	J. Ritter	Ursprung VS75832-LA
			Erstellt durch M. Weigel
			Erstelldatum 31.03.2021
			Genehmigt von J. Ritter
			Ausgabedatum 31.03.2021
		Titel, zusätzlicher Titel WLN 06001-12117	
		3200002684 (60881-002)	
		Sachnummer	
		weber VS75832-UANG-02	
-	Erstausgabe	04.03.2021	H. Brück
Änd.	Änderungstext	Ausgabe	Genehmigt
			Maßstab/Blatt 1:40 1 / 1

Pos.	Benennung	Artikel-Nr./article-no.	Länge/length (mm)	Breite/width (mm)	Höhe/height (mm)	Gewicht/weight (kg)
6	Portionsgewichtsanzeige	portion-control-system	1100	900	2900	100
5	Pick & Place Roboter	Pick & Place Roboter	2830	2130	2315	1400
4	Compactbuffer	compactbuffer	6405	900	1475	k.A.
3	Wippe (BB=3x105 GL=450)	rocker	538	1215	935	200
2	Dreisprwaage, CCW 500(BB=3x105 L=490)	checkweigher with three tracks,CCW 500(BB=3x105 L=490)	490	533	882	350
1	Textor Slicer	Textor Slicer	3476	2903	2401	2200