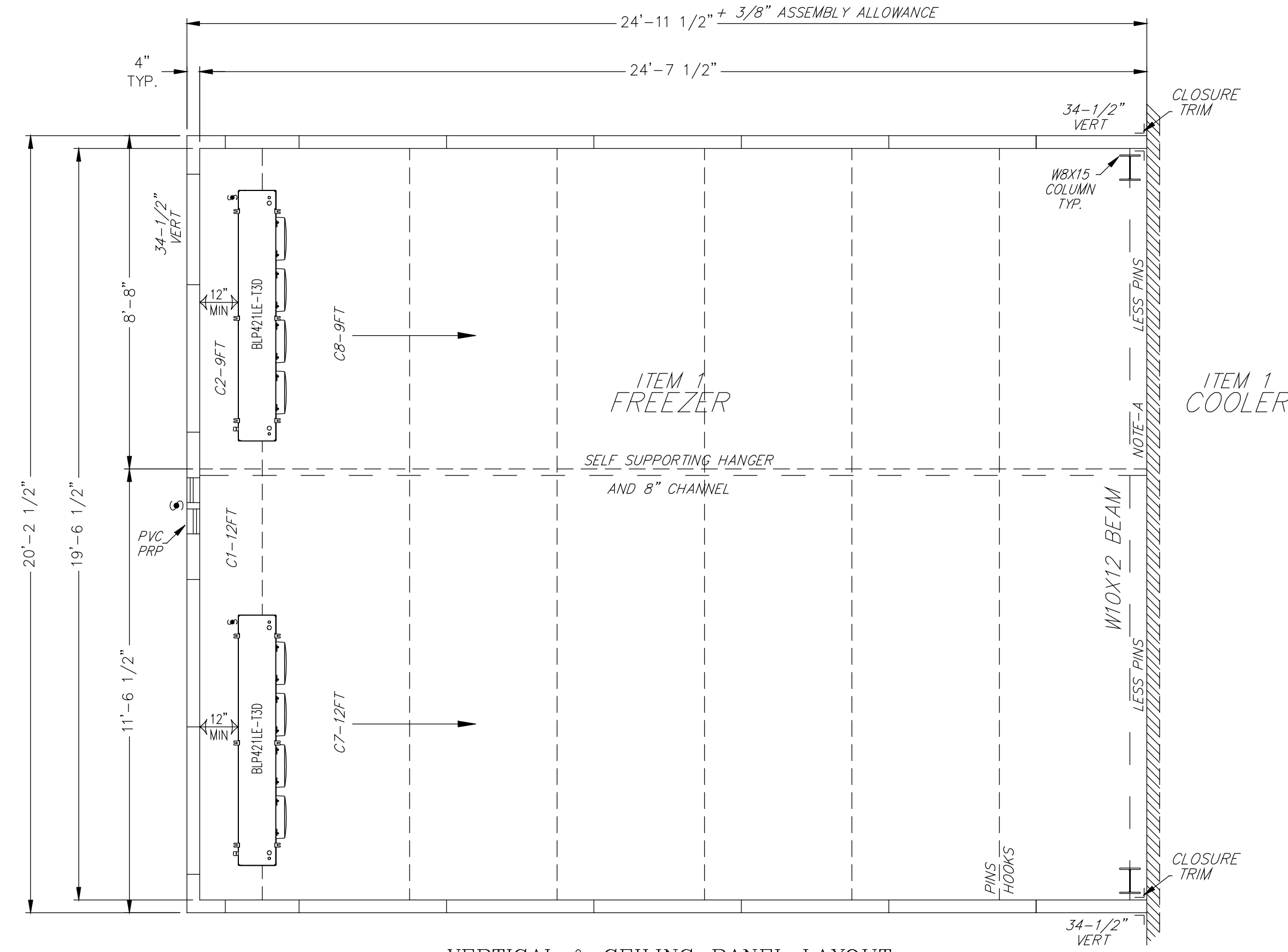


- FLOOR PANEL LAYOUT -



- VERTICAL & CEILING PANEL LAYOUT -

SPECIFICATIONS

24'-11 1/2" X 20'-2 1/2" X 17'-0"
INSTALLATION
 - INDOOR
 - LOADING HEIGHT - AT LEAST 30" OF OPEN SPACE MUST BE MAINTAINED BETWEEN TOP OF PRODUCT AND CEILING PANELS

INSULATION
 - POURED IN-PLACE POLYURETHANE FOAM
 - BALLY PANELS AND DOORS ARE CERTIFIED COMPLIANT WITH CURRENT FEDERAL DOE REGULATIONS FOR WALK-IN COOLERS & FREEZERS
 - BALLY PANELS AND DOORS EXCEED MINIMUM R-VALUES* FOR COOLERS (MINIMUM R-25, EXCLUDING FLOORS), AND FREEZERS (MIN. R-32, EXCEPT FLOORS, WHICH ARE MIN. R-28)
 *WHEN TESTED PER ASTM C518 TO FEDERAL REG. 431.304

EXTERIOR FINISH
 - EMBOSSED WHITE GALVANIZED
INTERIOR FINISH
 - EMBOSSED WHITE GALVANIZED

FLOOR FINISH
 - (INTERIOR) GALVANIZED STEEL
 - (EXTERIOR) EMBOSSED WHITE GALVANIZED

REFRIGERATION - BY BALLY (CONDENSING UNIT MOUNTED OUTDOORS)

QTY	H/P	RFGT TYPE	MODEL NUMBER	POWER SUPPLY	COMPRESSOR FLA LRA	FAN MTRS QTY HP FLA	TOTAL WATS DEFROST	AMPS	MCA	MAX FUSE (AMP)	
2	4.0	FRABALBESADAD-LE-HT4D	460/3/60	10.2	60.0	1	1.1	3560	11.3	13.9	20
2	1	BLP421LE-130	208-230/3/60			4	1/15	0.6	10	12.5	15

■ ALL CONDENSATION DRAIN LINES MUST BE SLOPED AT LEAST 1/2" PER 12" INSTALLATION
 ■ FREEZER CONDENSATION DRAIN LINES MUST BE HEATED, INSULATED AND TRAPPED INDIVIDUALLY BY OTHERS
 ■ ALL SPECIFICATIONS LISTED ABOVE ARE FOR INDIVIDUAL UNITS ONLY.

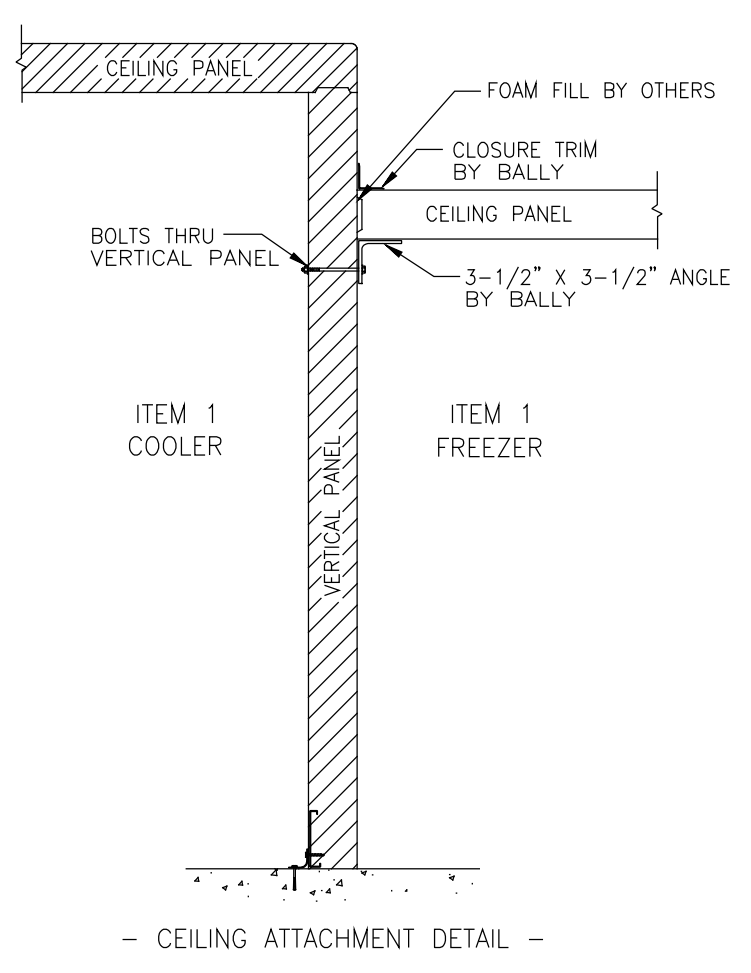
CEILING SUPPORT - STEEL BY BALLY
 - SELF-SUPPORTING HANGER AND 8" CHANNEL
 SEE NOTIFICATION 249-86.

GENERAL NOTES
 - NOTE: BALLY TO FURNISH EW CLOSURE TRIM, PLEASE ADVISE SIZE AND QUANTITY. ALL FASTENERS AND INSTALLATION BY OTHERS.
 - NOTE: BALLY TO FURNISH (1) PVC PRP MOUNTED IN VERTICAL PANEL AS SHOWN.
 - NOTE A: BALLY TO FURNISH 3-1/2" X 3-1/2" X 1/4" GALVANIZED ANGLE IRON (PAINTED WHITE) FOR CEILING SUPPORT ALONG THIS WALL.

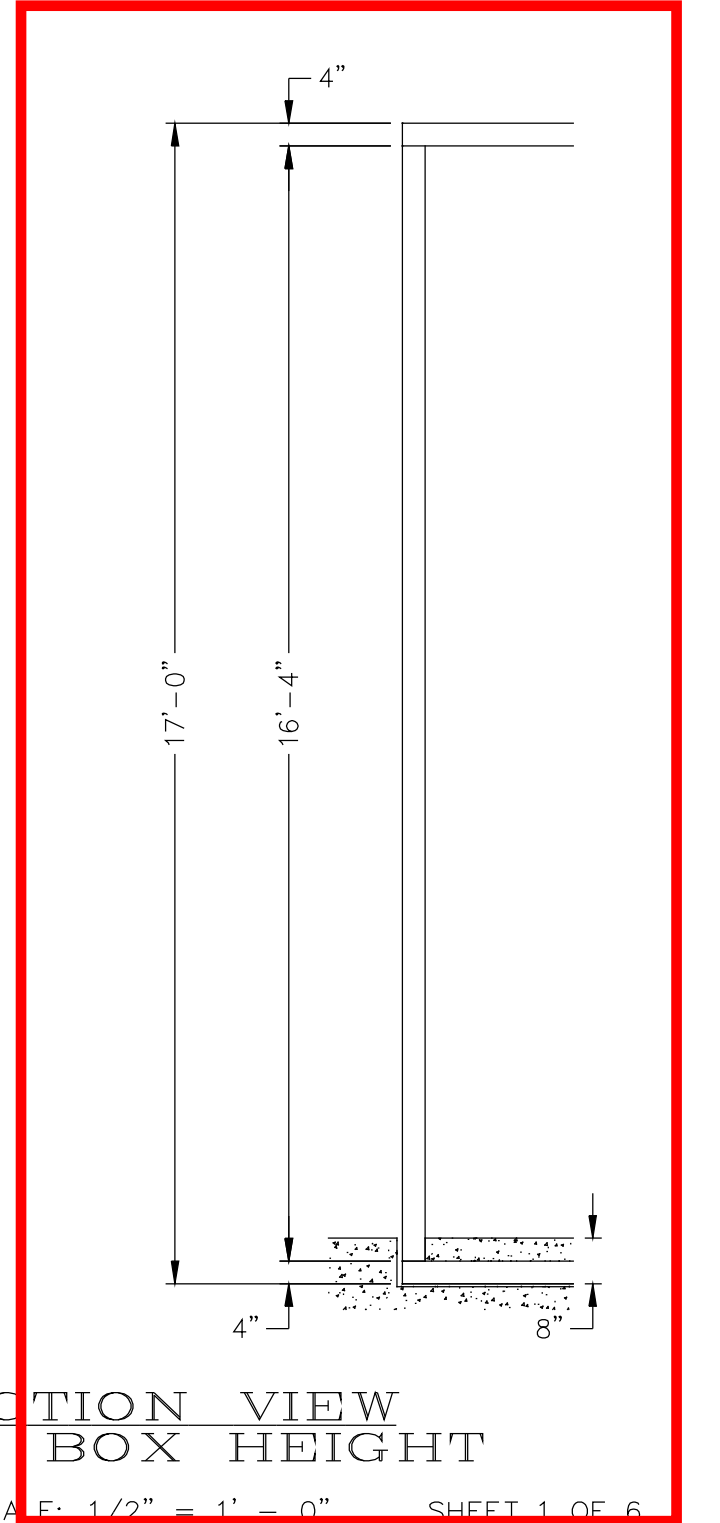
PLAN VIEW-C

SCALE: 1/2" = 1' - 0"

STEEL SUPPORT DETAILS FOUND ON SHEET #2



- CEILING ATTACHMENT DETAIL -

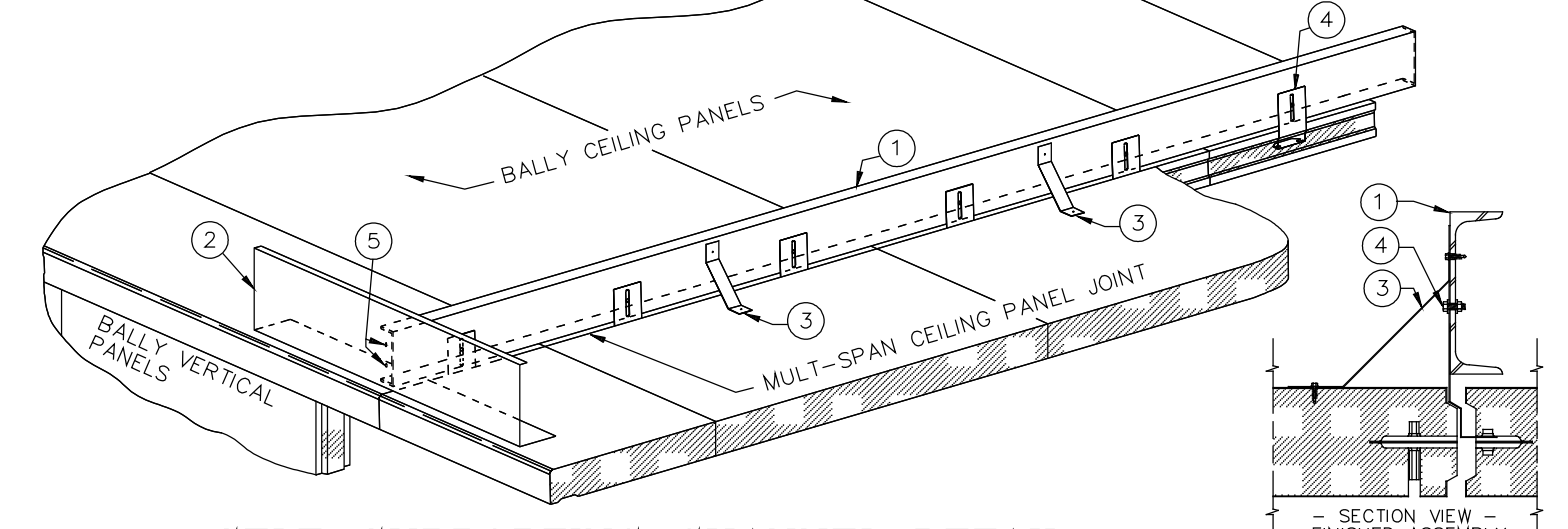


SECTION VIEW THRU BOX HEIGHT

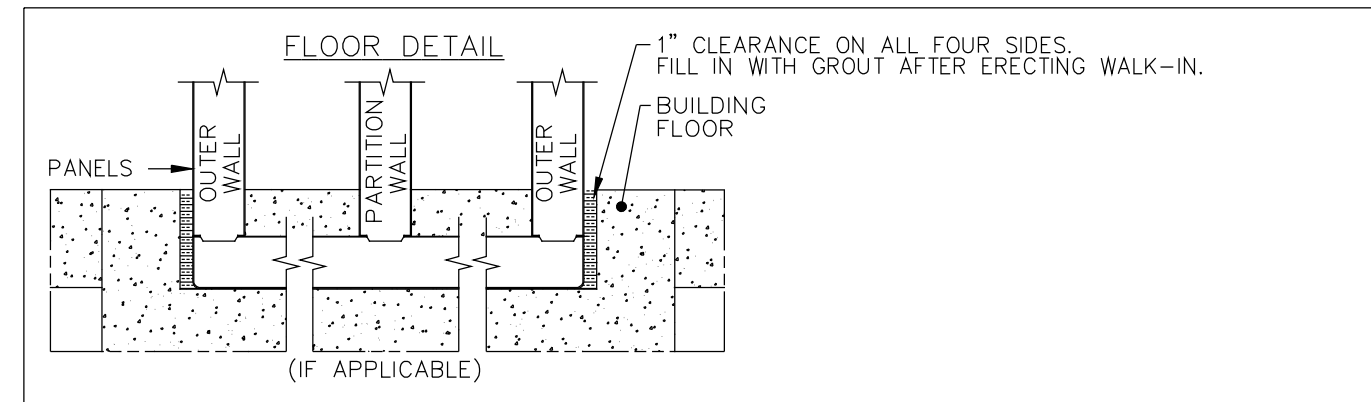
SCALE: 1/2" = 1' - 0" SHEET 1 OF 6

IMPORTANT: THIS TYPE OF SUPPORTING SYSTEM IS DESIGNED TO SUPPORT CEILING PANELS ONLY WITH LIMITED INSTALLATION PERSONNEL TRAFFIC. AVOID STACKING OF COMPONENTS AND EQUIPMENT IN CONCENTRATED FORM EQUIPMENT AND ACTIVE EQUIPMENT ACCESS ROUTE. CAT-WALKS MUST BE SUSPENDED INDEPENDENT OF INSULATED PANELS.
NOTE: CHANNEL SUPPORT USED AS SOLID CHANNEL FROM BUILDING (OUTER/PARTITION) WALL TO BUILDING (OUTER/PARTITION) WALL. THIS SUPPORT IS USED FOR INDOOR BUILDING LOCATIONS ONLY.
NOTE: SUPPORT FOR A LOAD OF 59 POUNDS PER RUNNING FOOT OF CHANNEL UNIFORMLY DISTRIBUTED, AND A CONCENTRATED LOAD OF 250 POUNDS AT THE MID SPAN OF THE CHANNEL. MAXIMUM DEFLECTION WILL NOT EXCEED L/240 (WHERE L IS THE LENGTH OF THE CHANNEL).

- 1 - 6", 8" OR 10" HIGH CHANNEL
- 2 - LOAD BEARING "C" SECTION 48" LONG (CENTERED ON CHANNEL)
- 3 - .073 GALVANIZED BRACES ON 46" CENTERS (INSTALLED TO PREVENT ROTATION OF THE CHANNEL) INSTALLED WITH 1/4-14 X 7/8" TEK SCREWS
- 4 - PIECE-A CLIPS WITH 3/8" Ø X 1-1/2" BOLTS WITH NUT AND (2) WASHERS
- 5 - 1/2" Ø X 1-1/2" BOLTS WITH NUT AND WASHER



SELF-SUPPORTING CHANNEL DETAIL
 (6", 8" OR 10" HIGH CHANNELS)
 (SEE NOTIFICATION: 249-86)



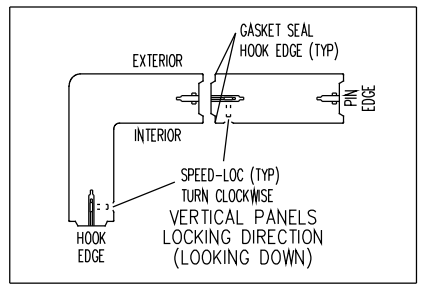
NOTE: BEARING SURFACE UNDER FLOOR PANELS MUST BE LEVEL AND DRY. BOTTOM OF PANELS MUST HAVE AT LEAST 80% CONTACT WITH FLOORS.
NOTE: IF MOISTURE IS PRESENT UNDER BUILDING FLOOR, A VAPOR BARRIER MUST BE APPLIED BETWEEN BUILDING FLOOR AND PREFAB PANELS.
NOTE: BALLY TO FURNISH THE PREFAB SECTIONAL WALK-IN COOLER OR FREEZER ONLY (UNLESS OTHERWISE SPECIFIED). THIS INCLUDES WALLS AND CEILING PANELS.
NOTE: THESE DRAWINGS ARE INTENDED TO SERVE AS GUIDE LINE DRAWINGS ONLY. THEY ARE NOT INTENDED TO BE CONSTRUCTION DRAWINGS, AS CONDITIONS MAY VARY WIDELY. DIMENSIONAL AND MATERIAL DESIGN TO BE DETERMINED BY PROJECT CONSTRUCTION ENGINEER.

RESTRICTED, CONFIDENTIAL DOCUMENT.
 THIS DRAWING AND ALL INFORMATION SHOWN HEREON ARE THE EXCLUSIVE PROPERTY OF BALLY REFRIGERATED BOXES INC., AND ARE SUBMITTED ONLY ON A CONFIDENTIAL BASIS. THE RECIPIENT AGREES NOT TO REPRODUCE THE DRAWING, TO RETURN IT UPON REQUEST, AND THAT NO DISCLOSURE OF THE DRAWING OR THE INFORMATION SHOWN HEREON WILL BE MADE TO A THIRD PARTY WITHOUT PRIOR WRITTEN CONSENT FROM BALLY REFRIGERATED BOXES INC.

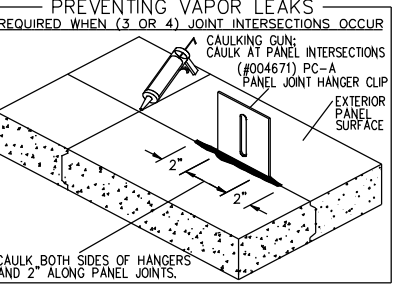
SIGNED APPROVAL
 SIGNED _____
 DATE _____
PLEASE READ
 THIS DRAWING HAS BEEN CAREFULLY CHECKED BY OUR DRAFTING DEPARTMENT. HOWEVER, ERRORS OF INTERPRETATION CAN OCCUR. THEREFORE, BEFORE YOU RETURN DRAWING MARKED "APPROVED", BE CERTAIN THAT YOU CHECK THEM CAREFULLY.
 NOTE - THIS ORDER WILL NOT BE SCHEDULED FOR PRODUCTION UNTIL RECEIPT OF APPROVED DRAWINGS BY BALLY.

IMPORTANT - PLEASE READ
 THESE DRAWINGS ARE NOT TO BE CONSIDERED AS APPROVED BY LOCAL OR STATE BUILDING AUTHORITIES. THEY HAVE BEEN PREPARED SOLELY FOR THE GUIDANCE OF REGISTERED ARCHITECTS, AND ENGINEERS AND FOR THE ASSISTANCE OF LOCAL CODE REQUIREMENTS. THIS INCLUDES STRUCTURAL DESIGN AS WELL AS ANY WORK PERFORMED BY THE GENERAL CONTRACTOR, BALLY REFRIGERATED BOXES INC. IN PREPARING THESE DRAWINGS AND SPECIFICATIONS, DOES NOT ASSUME ANY RESPONSIBILITY FOR THE SUCCESSFUL COMPLETION OR USAGE OF THE STRUCTURE DESCRIBED.
 THE DRAWINGS AND SPECIFICATIONS DESCRIBE A BUILDING ASSEMBLED FROM BALLY PANELS INSULATED WITH URETHANE "FOAMED-IN-PLACE". THE SIZE AND SHAPE IS THAT WHICH MOST CLEARLY MEETS DIMENSIONS SUBMITTED BY THE USER.
 BALLY REFRIGERATED BOXES INC. PROVIDES PANELS FREQUENTLY SPECIFIED BY OTHERS, AND IS NOT RESPONSIBLE FOR THE SELECTION OR RECOMMENDATION BY OTHERS OF THE PANEL FINISH FOR ANY BUILDING OR WALK-IN APPLICATION.

		FOR	
BALLY (NC OFFICE) 135 LITTLE NINE DRIVE MORRISVILLE, NC 27567 PHONE: (252) 246-2063 FAX: (252) 246-2064		BALLY (PA OFFICE) 20 NORTH FRONT ST. (SUITE 8) BALDY, PA 19002 PHONE: (610) 702-2210 FAX: (610) 702-2211	
CLOVER WAREHOUSE		FREEZER	
DRAWING NUMBER	2202594CD (302092CD)	DATE	04/21/22
DRAWN BY	RJC	ORDER NUMBER	2202594
LEB'D BY		CHK'D BY	
REV	1 REVISED REFRIGERATION; REMOVED EAST WALL & ADDED STEEL	BY	RJC
	DESCRIPTION	DATE	04/25/22



BALLY FLOOR PANEL GUIDELINES
 STATIONARY LOADS - 100 LBS. (UNIFORMLY DISTRIBUTED)
 MOBILE EQUIPMENT (DOLLIES OR CARTS) - BALLY FLOOR PANELS MUST BE REINFORCED WITH FORMED IN FLOOR UNDER INSULATED FLOOR SHEET (ALUMINUM DIMOND READ OVERLAY IS ALSO AN OPTION).
 A MINIMUM OF 4" REINFORCED CONCRETE MUST BE PROVIDED OVER BALLY FLOOR PANELS.
AIR GAP/CIRCULATION RECOMMENDATION: BALLY RECOMMENDS A 2" GAP BETWEEN WALK-IN VERTICAL PANELS AND EXISTING BUILDING WALLS FOR AIR CIRCULATION. THIS IS ALSO RECOMMENDED THAT AIR EXCHANGE/CIRCULATION BE PROVIDED FOR WALK-INS THAT ARE WITHIN AN ENCLOSED AREA.
 5 - ELECTRICAL CONNECTION



THIS DRAWING IS TO BE USED FOR "APPROVAL ONLY".
 -> DO NOT USE THIS DRAWING FOR INSTALLATION!
 EVERY SHIPPED ORDER WILL HAVE A FINALIZED "AS-BUILT" DRAWING.