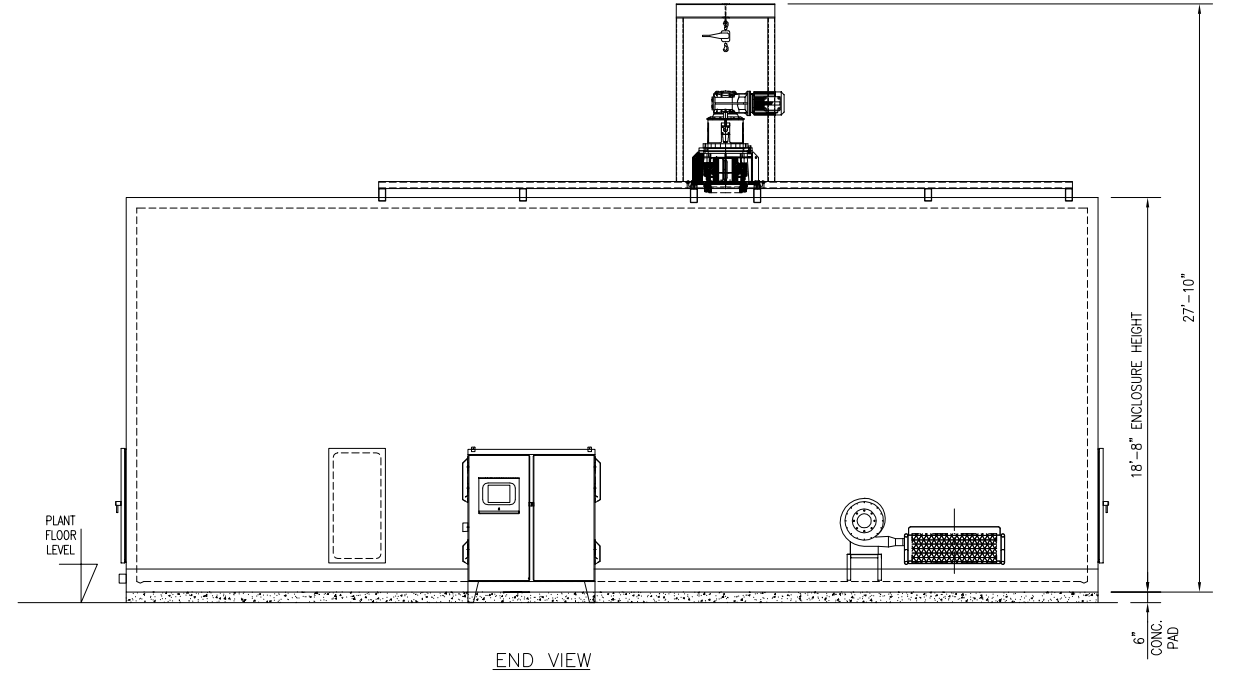
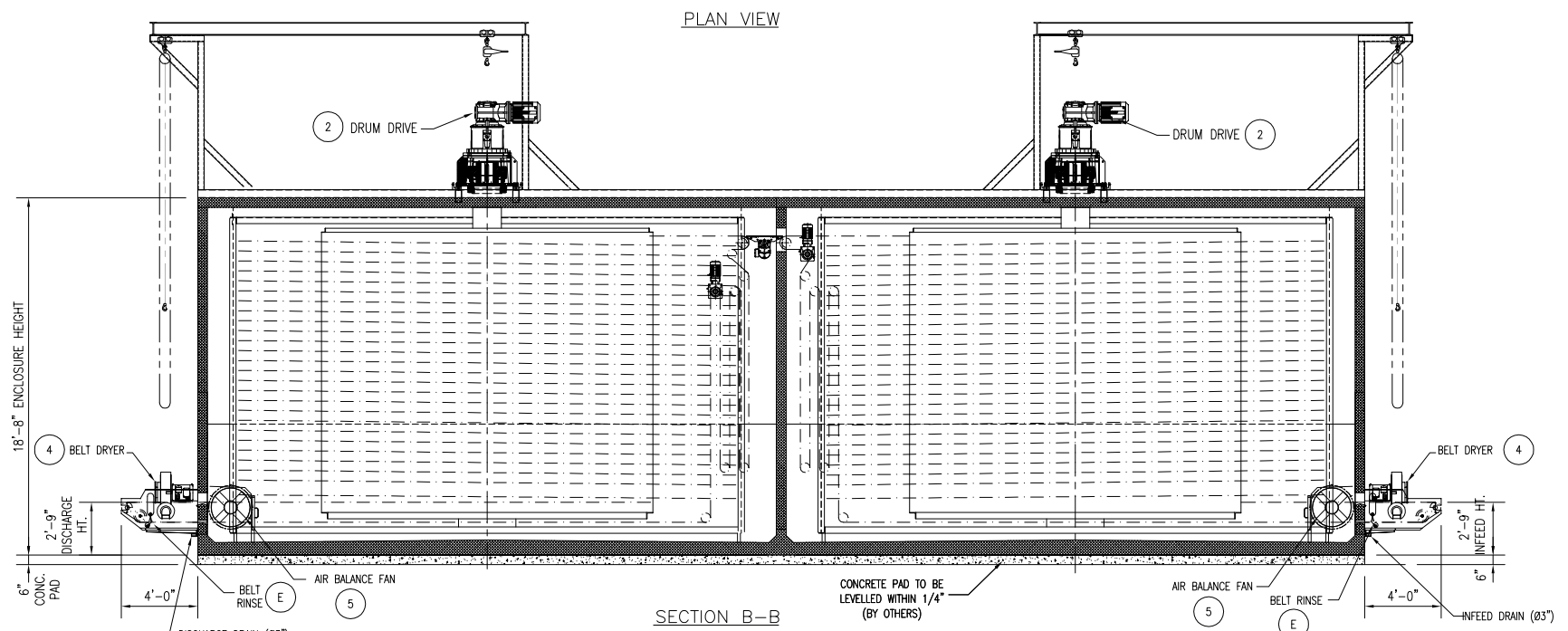
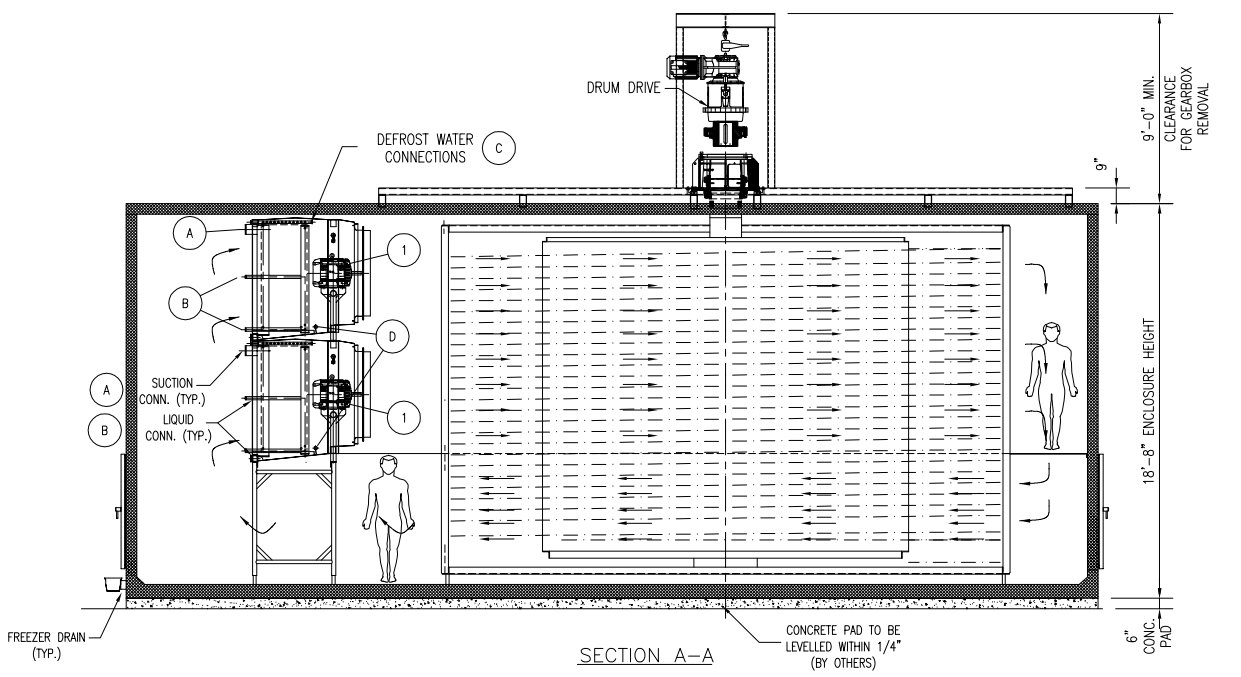
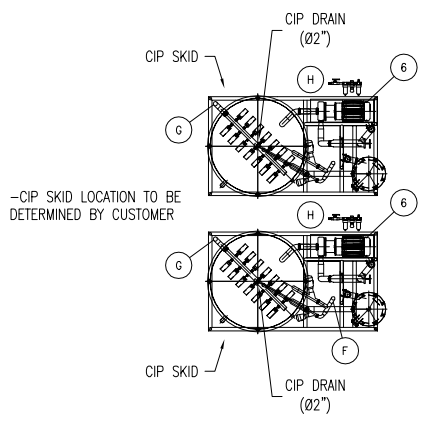
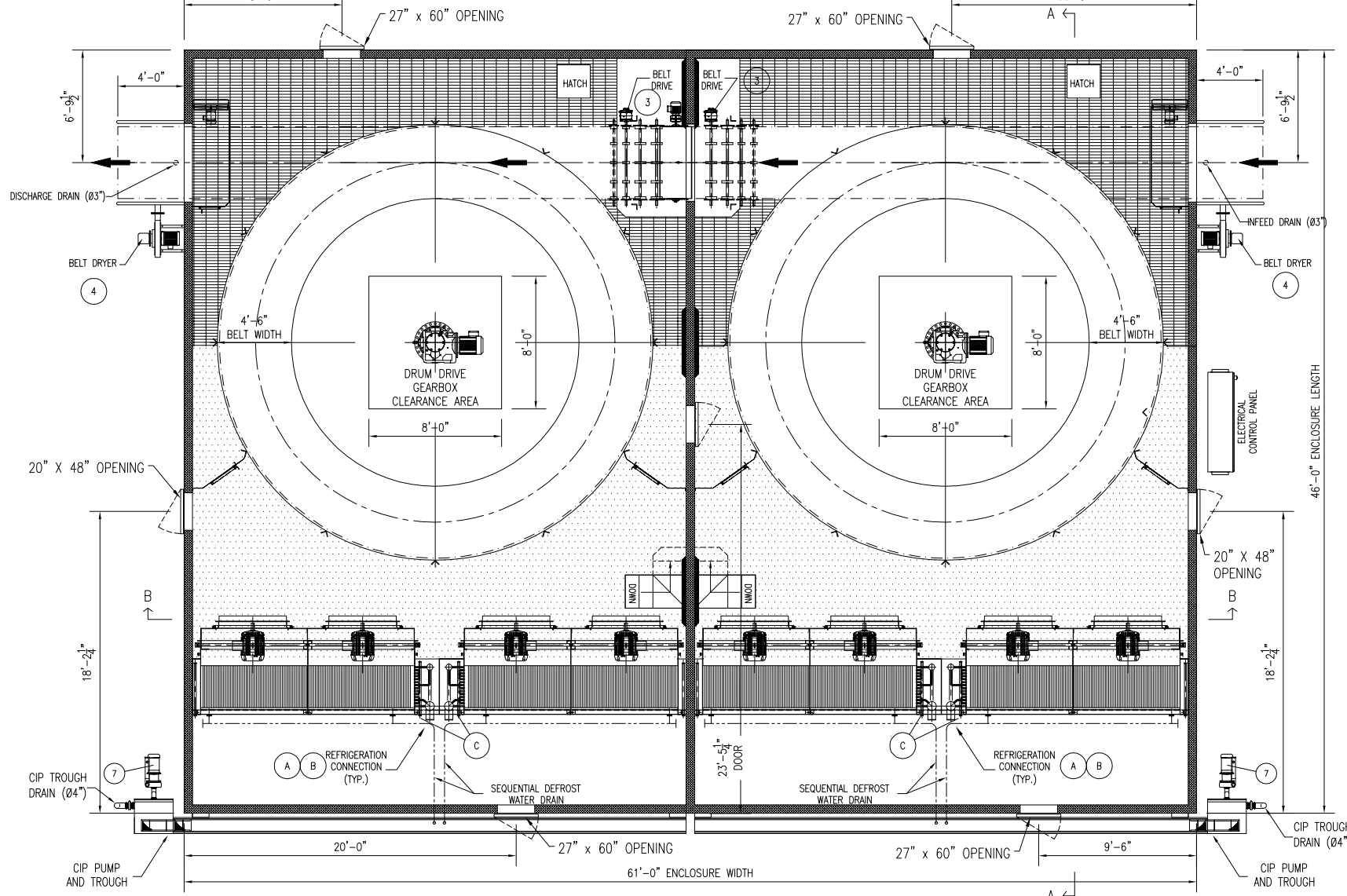


This drawing remains the property of Aerofreeze Incorporated, reproduction in any manner without written consent is not allowed. This drawing may not be shown nor given to third parties. Do not scale this drawing.

MICRO	REV.	DESCRIPTION	DATE	SIGN.	CHECK	APPR.
	A	ADD LABELS, CHANGE CIP TROUGH	OCT/21/10			
	B	ADD DRAIN LOCATIONS	OCT/28/10			
	C	FINALIZE DOOR LOCATIONS AND SIZES	NOV/5/10			



PRODUCT :		CONNECTION DETAILS:		ELECTRICAL DETAILS:		MAJOR COMPONENTS:						
Type:	Capacity:	No.:	Type:	Connection Type:	Type:	Horse Power:	Voltage:	Amp:	Item:	Dimensions:	Unit Weight:	Qty:
Hot Pockets	17,250 lbs/hr (1000ppm)	1	Freezer Fan Motor	- x -" SUCTION CONN.	CO2	16 x 20 Hp	460/3/60	30 A	Floor modules	TBD	TBD	TBD
		2	Drum Drive Motor	- x -" LIQUID CONN.	CO2	2 x 25 Hp	460/3/60	31.5 A	Freezer Coil	TBD	TBD	TBD
		3	Auxiliary Drive Motor	2 x 1 1/2" SS304 COIL DEFOST CONN.	FERRULE	2 x 2 Hp	460/3/60	3.1 A	Drum	TBD	TBD	TBD
		4	Belt Dryer Fan Motor	1 x 1 1/2" SS304 SEQ. DEF. PAN RINSE CONN.	FERRULE	2 x 5 Hp	460/3/60	5.7 A				
		5	Balance Fan Motor	1 x 1 1/2" SS304 PIPE BELT RINSE	SS304 MPT	2 x 2 Hp	460/3/60	2.7 A				
		6	CIP supply pump	1 x 2" 304SS PIPE CIP WATER	WATER	2 x 30 Hp	460/3/60	33 amp				
		7	CIP return pump	1 x 2" 304SS PIPE CIP STEAM	2" NPT ANGLE SEAT VALVE	2 x 20 Hp	460/3/60	23 amp				
				1 x 3/8" TUBE	TUBE FITTING							

Capacity: TOTAL 400 TR @ -45°F 4:1 RECIRC.
 Capacity: 100 GPM @ 30 PSI PER COIL
 Capacity: 50 GPM @ 30 PSI PER COIL
 Capacity: 50 GPM @ 20 PSI
 Capacity: 200 GPM
 Capacity: 9300 LB/HR @ 100 PSI
 Capacity: 15 CFM @ 100 PSI

Total Amp (FLA) = 580 amp Main Breaker = 800 amp

CONFIDENTIAL

This drawing and all designs, details, inventions, or developments covered thereby are confidential and the exclusive property of AERO Heat Exchanger Inc. which reserves all patent or other rights. Copying, reproduction, or duplication, in whole or in part, is forbidden unless expressly authorized by AERO Heat Exchanger Inc. Any such copies shall also be the exclusive property of AERO Heat Exchanger Inc. This drawing and any such copies shall be returned when requested and used subjected to above conditions only on authorized Company work.

AEROFREEZE RICHMOND B.C. CANADA
 REDMOND WA. U.S.A.

NESTLE, JONSBORO
FREEZE Model 5220-2x26-156
Spiral Freezer Layout

DATE	SCALE
OCT/17/10	NTS
DRAWING No. 00111-01	REV. C